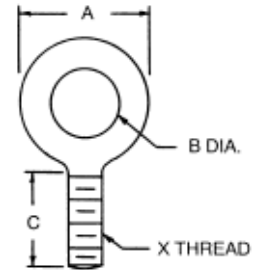


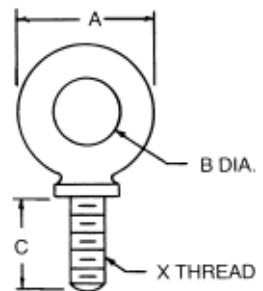
- ▶ Drop forged steel
- ▶ Heat treated
- ▶ Manufactured from C-1035 steel
- ▶ Natural finish
- ▶ Load capacity for straight pull only

PART #	Thread				Pounds Load
	X	A	B	C	
EB-150	1/4-20	1-1/4	3/4	1	500
EB-151	5/16-18	1-1/2	7/8	1-1/8	900
EB-152	3/8-16	1-21/32	1	1-1/4	1400
EB-153	7/16-14	1-27/32	1-3/32	1-3/8	2000
EB-154	1/2-13	2-1/16	1-3/16	1-1/2	2600
EB-155	9/16-12	2-9/32	1-9/32	1-5/8	3000
EB-156	5/8-11	2-1/2	1-3/8	1-3/4	4000
EB-157	3/4-10	2-13/16	1-1/2	2	6000
EB-158	7/8-9	3-1/4	1-11/16	2-1/4	7000
EB-159	1-8	3-9/16	1-13/16	2-1/2	9000
EB-160	1-1/8-7	4	2	2-3/4	10000
EB-161	1-1/4-7	4-7/16	2-3/16	3	15000
EB-162	1-1/2-6	5-3/16	2-1/2	3-1/2	19600

## Forged Eye Bolts



## Forged Eye Bolts with shoulder



		INCH				Pounds Load
Steel PART #	Stainless Steel PART #	Thread X	A	B	C	
EB-250	EB-250SS	1/4-20	1-1/4	3/4	1	500
EB-251	EB-251SS	5/16-18	1-1/2	7/8	1-1/8	900
EB-252	EB-252SS	3/8-16	1-21/32	1	1-1/4	1400
EB-253	-	7/16-14	1-27/32	1-3/32	1-3/8	2000
EB-254	EB-254SS	1/2-13	2-1/16	1-3/16	1-1/2	2600
EB-255	-	9/16-12	2-9/32	1-9/32	1-5/8	3000
EB-256	EB-256SS	5/8-11	2-1/2	1-3/8	1-3/4	4000
EB-257	EB-257SS	3/4-10	2-13/16	1-1/2	2	6000
EB-258	-	7/8-9	3-1/4	1-11/16	2-1/4	7000
EB-259	-	1-8	3-9/16	1-13/16	2-1/2	9000
EB-260	-	1-1/8-7	4	2	2-3/4	10000
EB-261	-	1-1/4-7	4-7/16	2-3/16	3	15000
EB-262	-	1-1/2-6	5-3/16	2-1/2	3-1/2	19600

		METRIC				Kilos Load
Steel PART #	Thread X	A	B	C		
EB-270	M6 x 1.0	32mm	19mm	25.4mm	210	
EB-271	M7 x 1.0	38.5	22	28.5	370	
EB-272	M8 x 1.25	42	25	31.7	450	
EB-273	M10 x 1.5	47	28	35	740	
EB-274	M12 x 1.75	52.5	30	38	1030	
EB-275	M14 x 2.0	58	35	44.5	1600	
EB-276	M16 x 2.0	63.5	35	44.5	1600	
EB-277	M18 x 2.5	71.5	38	51	2140	
EB-278	M20 x 2.5	83	43	57	2860	
EB-279	M24 x 3.0	90.5	46	63.5	3850	
EB-280	M27 x 3.0	101.5	51	70	5200	
EB-281	M30 x 3.5	113	55	76	6400	
EB-282	M36 x 4.0	132	63	89	8970	

- ▶ Drop forged steel, heat treated
- ▶ Available in inch and metric sizes
- ▶ Manufactured from C-1035 steel
- ▶ Some sizes available in Type 316 stainless steel